



The façade of the Les Courtilières, the second-largest building in Europe is clad with over 20,000 square metres of Ezarri glass mosaic. (Images courtesy of Europe Imports)



Mosaic modernism

Many leading tile manufacturers are going to great lengths to introduce new and entirely novel products that are slim, lightweight and colourful. Remarkably, one of the most flexible products is mosaic, an ancient material available today in a variety of finishes, including ceramic, glass and natural stone.

Our featured projects depict remarkable, contemporary use of glass mosaic on walls, floors and facades.



Les Courtilières, Paris

Les Courtilières, situated in the Pantin commune of north-eastern Paris, was originally constructed in the 1950s and comprised 630 flats. Mexico-born architect Emile Aillaud was famed for introducing, 'smooth, abstract forms, in curved serpentine compositions'.

The two kilometre-long façade flows eccentrically around four hectares of parkland. It is the second largest building in Europe, and understandably, it has been 20th Century Heritage Listed.

Renovations commenced in 2000 which involved a complete restoration of the curved façade. The project was undertaken by architects Dominique Renaud and Philippe Vignaud. The new façade features 20,000 square metres of Ezarri glass mosaic rendered in a subtle, yet colourful, cascading blend which flows effortlessly over the curved substrate.

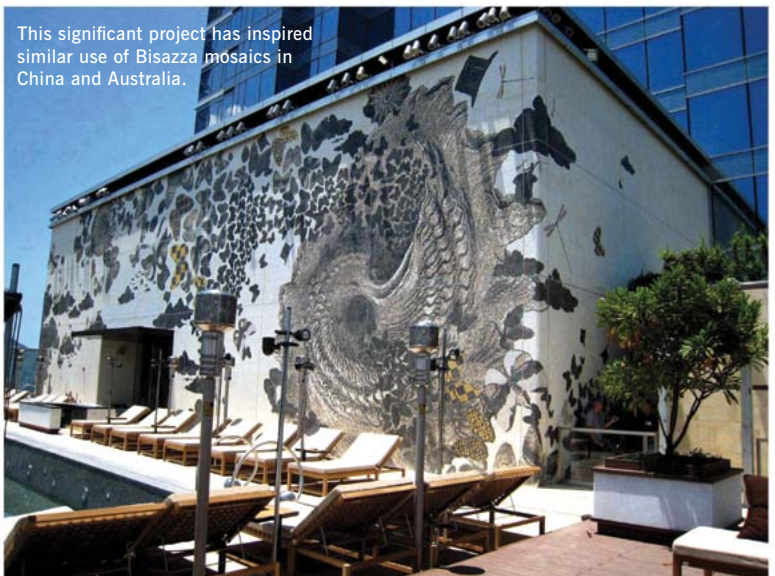
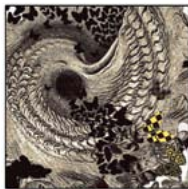
The 'W' Hotel, Hong Kong

Bisazza 10 x 10mm glass mosaic is undoubtedly the stand-out element on the

76th floor 'wet deck' of the funky, up-market 'W' Hotel in Hong Kong.

The superb butterfly mosaic designed by Australian designer Fabio Ongarato is perched 692 feet above Victoria Harbour. The whimsical mosaic

took 6 weeks to assemble by hand, and a further 6 weeks to install, using Bisazza adhesives and fill-gel grouts. It is hard to imagine how the same striking effect could be achieved with any other decorative surface finish.




This significant project has inspired similar use of Bisazza mosaics in China and Australia.

Les Fleurs Hotel, Sofia, Bulgaria

The elegant Les Fleurs boutique hotel is located in the Alexander Building, in the historical quarter of Sofia, Bulgaria.

When the establishment opened its doors seven years ago, a fabulous variety of Trend Mosaics were revealed in the lobby, restaurant, and guest suites, and on the facade.

External and internal walls, floors and curved stair treads and risers feature mosaic flowing over concave and convex surfaces. 

Floral mosaics by Trend Tile shine at Les Fleurs boutique hotel in Sofia, Bulgaria.



These Vitra products won the prestigious **Interior Innovation Award for 2014**, IMM Fair, Köln, Germany

UPTOWN SERIES by Vitra is ideal for internal and external applications, including facades, where the product's hydrophilic qualities allow rain and residue grime to literally be washed away. Organic pollutants are removed by a photocatalytic process. Anti-microbial and odour eliminating processes reduce the presence of bacteria and mould and remove airborne pollutants like cigarette smoke. 4 colours available – white, cream, mink and the featured dark grey, which emulates the look of concrete. The series is manufactured in a number of popular formats.

DTI is the sole national distributors for this product.

'your wholesaler of choice'



485 Zillmere Road, Zillmere
Brisbane QLD 4034
t: 07 38629195 f: 07 38629196
e: admin@dtiql.com.au

www.dtiql.com.au

Vitra's SAMBA porcelain floor tiles possess the right texture to introduce the enduring beauty of nature into an urban environment. The warm aesthetics of wood are a perfect complement to any room.

Size 200 x 1200mm
3 colours available - Beige, Wenge, Light Oak

